

PROGRAMMING THE TIMER #1


E. How to use OVERRIDE functions

619-programming-mode Timer is designed with 2 Override function, so as to widen its usage upon practicable application. Override function is **effective only** when Timer is running under **AUTO mode**.

Temporary-Override --- Follow procedure below:

Condition-1 When Timer's output status is "ON" Pressing **MANUAL** key, to move indicator from "AUTO" to "OFF", Timer output shall turn to "OFF" status, programs overridden. Pressing **MANUAL** again to switch Timer status to "AUTO", Timer's output shall continue maintaining "OFF". Timer shall resume its automatic operation when next program(event) calls for "ON". (With next opposite set point).

Condition-2 When Timer's output status is "OFF" Pressing **MANUAL** key, to move indicator from "AUTO" to "ON", timer output shall turn to "ON" status, programs overridden. Pressing **MANUAL** again to switch Timer status to "AUTO", Timer's output shall continue maintaining "ON". Timer shall resume its automatic operation when next program(event) calls for "OFF". (Until next opposite set point)

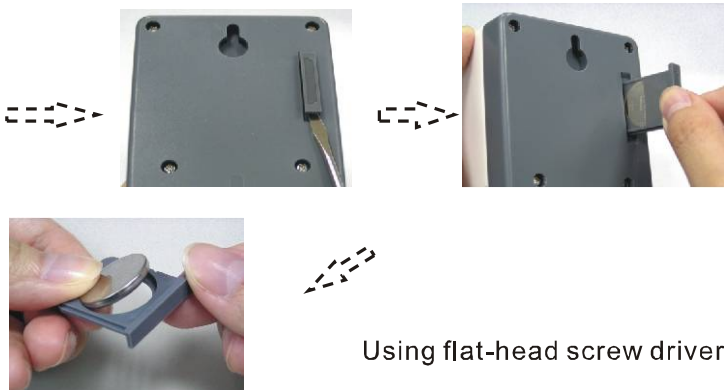
Random-Start-Up Override – Press and hold **DAY** key and then press **MIN** key. There shall be a symbol  shows on left corner of LCD screen, to indicate this Override in executing.

When this Override is being executed, the original programs will be stopped, and once every 10 to 120 minutes Timers shall automatically turn its output to "ON" status.

In practicable application which is applied to home-use, this Override function also called Anti-Burglar Override.

Once again to press and hold **DAY** key, and then press **MIN** key shall terminate this Override.

HOW TO REPLACE BATTERIES



Using flat-head screw driver

PROPOSED APPLICATION



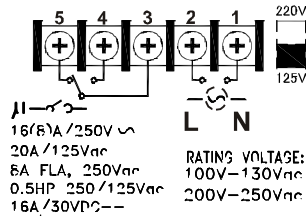
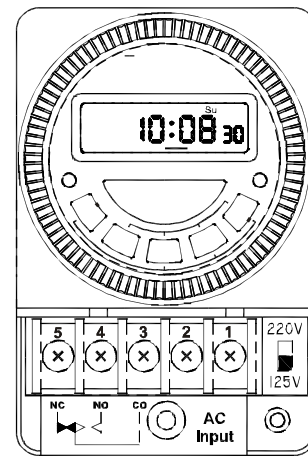
Output terminal of Timer is produced with Terminal-screw-Type to provide convenient electrical wiring upon mounting Timer on equipments.

Subject to output formats and types of Contact Rating, there are 3 different styles in TM-6331-series.

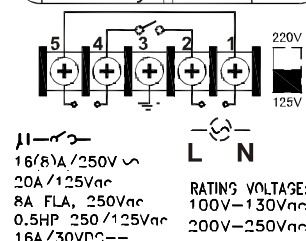
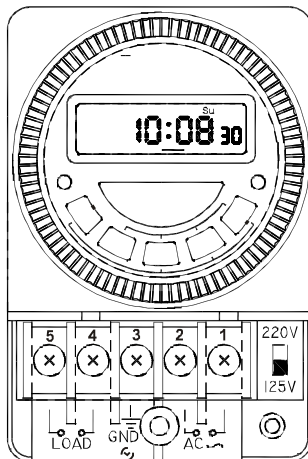
Remark:

1. For voltage and electrical RATING information, please refer to the markings on the back of timer.
2. See the back of timer for proper wire connections.
3. Timer may need to be connected to power source in order to set the program.

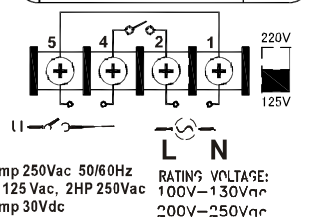
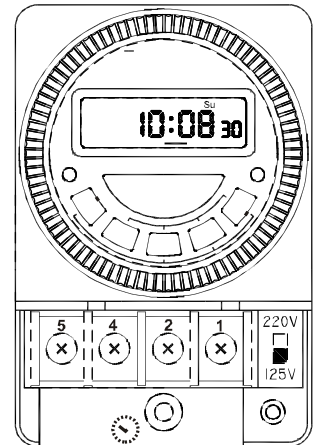
Follow graphic description below & Refer to section of **Descriptions to Model Code** on this instruction-sheet upon proceeding electrical wiring.



1.Volt Free 16Amp/250Vac
TM-6331AB



3.Volt Output 16Amp/250Vac
TM-6331



2.Volt Output 20Amp/250Vac
TM-6331H

